



The Aspen | 3,396 SF | 3-4 Bedroom | 3.5-4 Bath Daylight Basement

Elevation B



Elevation D



Elevation F



*Primary on the main living
with daylight basement.*

- Open concept main floor provides an excellent space for entertaining
- The optional multi-gen suite features a private entrance, living room, kitchenette, and more
- The separated primary suite features double doors upon entry, separate soaking tub and shower and an immense walk in closet
- The daylight basement features a spacious great room, full bathroom, laundry room, and bathroom

Elevation G



Elevation H



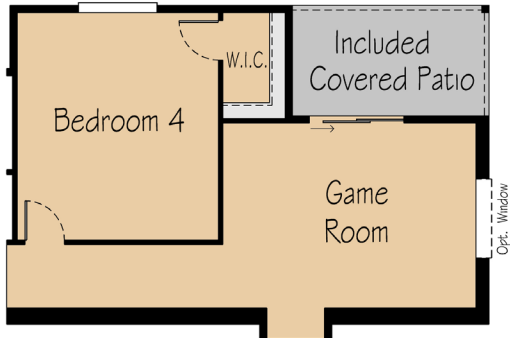
GarretteCustomHomes.com



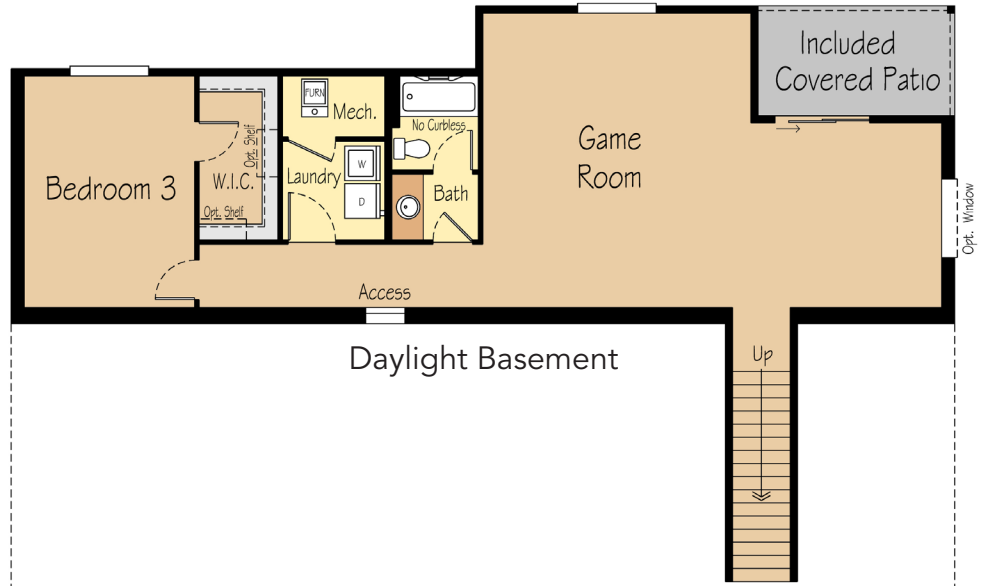


The Aspen | 3,396 SF | 3-4 Bedroom | 3.5-4 Bath

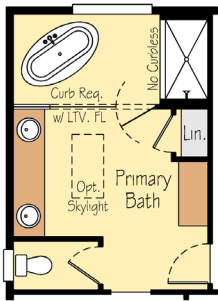
Daylight Basement



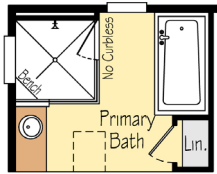
Opt. 4th Bedroom in Basement



Daylight Basement



Custom Shower Room



Custom Glass & Tile Shower



Opt. Multi-Gen



Main Floor



GarretteCustomHomes.com

