



The Rainier Daylight Basement | 4,190 SF | 4-6 Bedroom | 2.5-4.5 Bath

Elevation A



## *A spacious, open floor plan with a two-story great room and daylight basement*

- Spacious gourmet kitchen is accompanied by a large walk-in pantry
- Use the daylight basement as a media room, bonus room, and add a 5th bedroom for a guest suite.
- The master suite features a large window for natural light, spacious shower and an immense walk in closet.

 **Garrette Custom Homes**.com





# The Rainier Daylight Basement | 4,190 SF | 4-6 Bedroom | 2.5-4.5 Bath

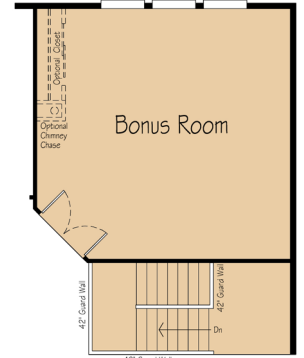
### Main Floor



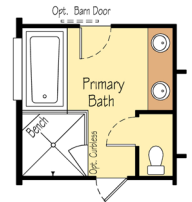
### Upper Floor



### Optional bonus room



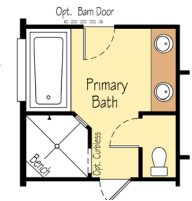
### Glass mud-set shower option



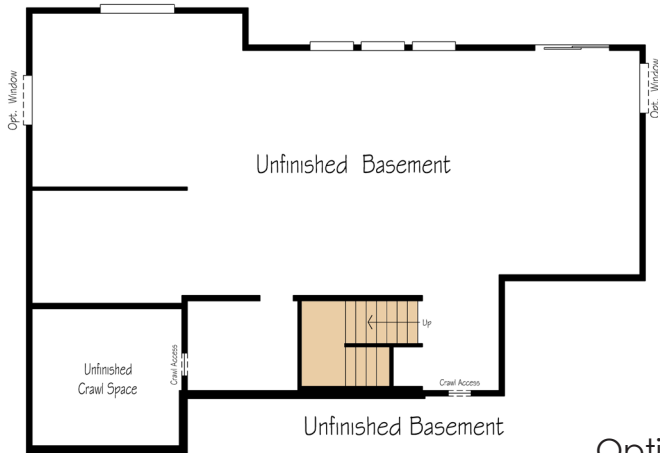
### Finished Basement Option



### Custom mud-set shower option



### Included Basement



### Optional Jack and Jill bathroom

